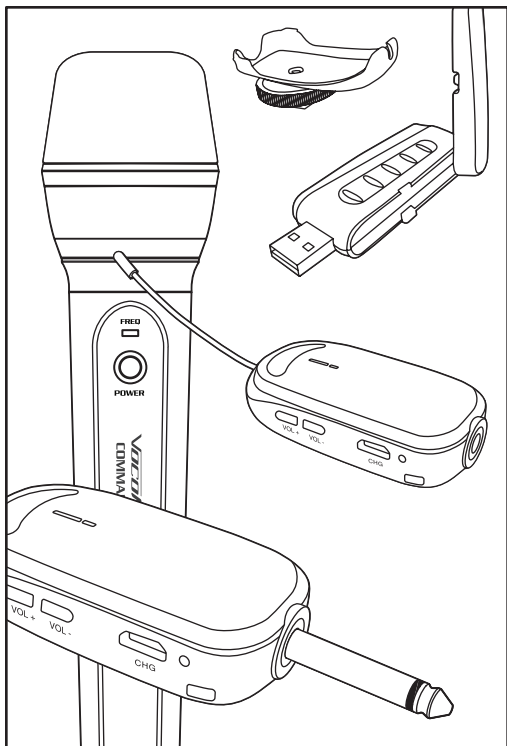


# Vocopro Commander

Professional Wireless Plug-in System  
Switch Frequency at Your Command!



## User Manual For All Devices

Commander model numbers:

HR, HT, IT, CT (1-4), PR (12, 34), UR (12, 34), GT3, GT9, SA, HM

# Welcome

And thank you for purchasing the Commander Series from VocoPro. Along with quality products our commitment to customer satisfaction means we have technical support professionals ready to assist you. Be sure to visit our website: [www.vocopro.com](http://www.vocopro.com) for the latest information on new products.

Please record the model number and serial number below, for easy reference, in case of loss or theft. These numbers are located on the packaging the item came in. Space is also provided for other relevant information.

**Model Number**

**Serial Number**

**Date of Purchase**

**Place of Purchase**

# Legal Disclaimer

---

All rights reserved. Information, specifications, diagrams, images, and instructions herein are subject to change without notice. VocoPro Products, logo and identifying product names and numbers herein are trademarks of VocoPro. Copyright protection claimed includes all forms and matters of copyrightable materials and information now allowed by statutory or judicial law or hereinafter granted. Product names used in this document may be trademarks or registered trademarks of their respective companies and are hereby acknowledged. All non-VocoPro Products, brands and product names are trademarks or registered trademarks of their respective companies.

VocoPro hereby disclaims any and all liabilities for property, equipment, building, and electrical damages, injuries to any persons, and direct or indirect economic loss associated with the use or reliance of any information contained within this document, and/or as a result of the improper, unsafe, insufficient and negligent assembly, installation, rigging, and operation of this product.



This device complies with Part 15 of the FCC rules. Operation is subject to the condition that this device may not cause harmful interference.

FCC license may be required

## Contact and Support:

---



**We are at:**

VocoPro  
1728 Curtiss Court  
La Verne, CA 91750



**Phone:**

Toll Free: 800-678-5348  
TEL: 909-593-8893  
FAX: 909-593-8890



**E-mail:**

[info@vocopro.com](mailto:info@vocopro.com)

**Tech Support:**

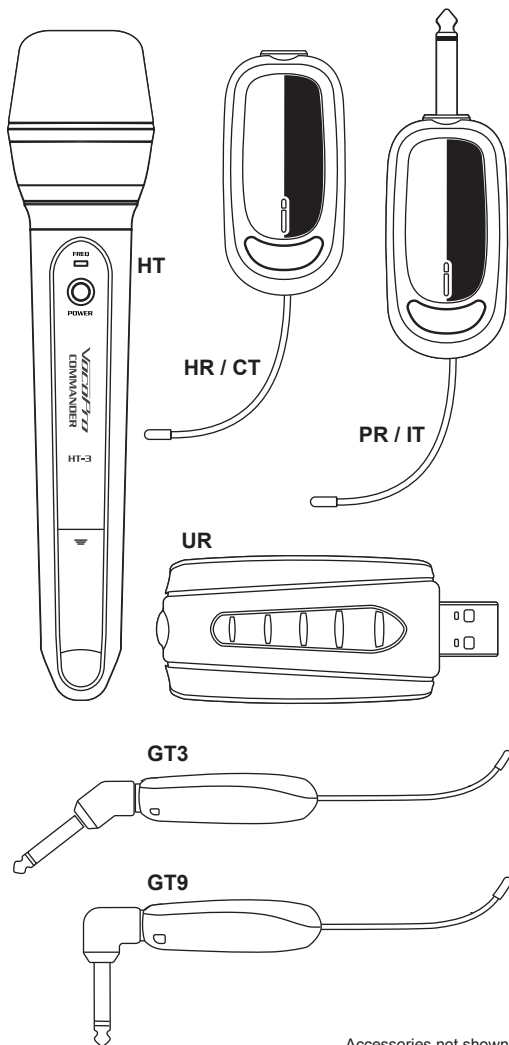
[techsupport@vocopro.com](mailto:techsupport@vocopro.com)



Visit us on Twitter,  
Instagram, and Facebook

# Devices:

---



-Accessories not shown



## CAUTION RISK OF SHOCK



**CAUTION:** To reduce the risk of electric shock, do not remove cover (or back). No user-serviceable parts inside. Only refer servicing to qualified service personnel.

### Explanation of Graphical Symbols



The lightning flash & arrowhead symbol, within an equilateral triangle, is intended to alert you to the presence of danger.



The exclamation point within an equilateral triangle is intended to alert you to the presence of important operating and servicing instructions.

## WARNING

To reduce the risk of fire or electric shock, do not expose this unit to rain or moisture.

1. Read Instructions - All the safety and operating instructions should be read before the appliance is operated.
2. Retain Instructions - The safety and operating instructions should be retained for future reference.
3. Heed Warnings - All warnings on the appliance and in the operating instructions should be adhered to.
4. Follow Instructions - All operating and use instructions should be followed.
5. Attachments - Do not use attachments not recommended by the product manufacturer as they may cause hazards.
6. Water and Moisture - Do not use this unit near water. For example, near a bathtub or in a wet basement and the like.
7. Carts and Stands - The appliance should be used only with a cart or stand that is recommended by the manufacturer.
- 7a. An appliance and cart combination should be moved with care. Quick stops, excessive force, and uneven surfaces may cause an overturn.
8. Ventilation - The appliance should be situated so its location does not interfere with its proper ventilation. For example, the appliance should not be situated on a bed, sofa, rug, or similar surface that may block the ventilation slots.
9. Heat - The appliance should be situated away from heat sources such as radiators, heat registers, stoves, or other appliances (including amplifiers) that produce heat.
10. Power Sources - The appliance should be connected to a power supply only of the type described in the operating instructions or as marked on the appliance.



11. Grounding or Polarization - Precautions should be taken so that the grounding or polarization means of an appliance is not defeated.

12. Power-Cord Protection - Power-supply cords should be routed so that they are not likely to be walked on or pinched by items placed upon or against them, paying particular attention to cords at plugs, convenience receptacles, and the point where they exit from the appliance.

13. Cleaning - Unplug this unit from the wall outlet before cleaning. Do not use liquid cleaners or aerosol cleaners. Use a damp cloth for cleaning.

14. Power lines - An outdoor antenna should be located away from power lines.

15. Non-use Periods - The power cord of the appliance should be unplugged from the outlet when left unused for a long period of time.

16. Object and Liquid Entry - Care should be taken so that objects do not fall and liquids are not spilled into the enclosure through openings.

17. Damage Requiring Service - The appliance should be serviced by qualified service personnel when:

- The power supply cord or plug has been damaged; or
- Objects have fallen into the appliance; or
- The appliance has been exposed to rain; or
- The appliance does not appear to operate normally or exhibits a marked change in performance; or
- The appliance has been dropped, or the enclosure damaged.

18. Servicing - The user should not attempt to service the appliance beyond that described in the operating instructions. All other servicing should be referred to qualified service personnel.

**Note:**

To CATV system installer's (U.S.A.): This reminder is provided to call the CATV system installer's attention to Article 820-40 of the NEC that provides guidelines for proper grounding and, in particular, specifies that the cable ground shall be connected as close to the point of cable entry as practical.

## **CALIFORNIA PROP 65 WARNING**

**⚠ WARNING:** Cables, Cable Assemblies, and Printed Circuit Boards can expose you to chemicals including lead and lead compounds which are known to the State of California to cause cancer and birth defects or other reproductive harm. For more information, go to **[www.P65Warnings.ca.gov](http://www.P65Warnings.ca.gov)**

## **1. IMPORTANT NOTICE: DO NOT MODIFY THIS**

**UNIT!:** This product, when installed as indicated in the instructions contained in this manual, meets FCC requirements. Modifications not expressly approved by Vocopro may void your authority, granted by the FCC, to use this product.

**2. IMPORTANT:** When connecting this product to accessories and/or another product use only high quality shielded cables. Cable(s) supplied with this product **MUST** be used. Follow all installation instructions. Failure to follow instructions could void your FCC authorization to use this product in the U.S.A.

**3. NOTE:** This product has been tested and found to comply with the requirements listed in FCC Regulations, Part 15 for Class "B" digital devices. Compliance with these requirements provides a reasonable level of assurances that your use of this product in a residential environment will not result in harmful interference with other electronic devices. This equipment generates/uses radio frequencies and, if not installed and used according to the instructions found in the owner's manual, may cause interference harmful to the operation of other electronic devices. Compliance with FCC regulations does not guarantee that interference will not occur in all installations. If this product is found to be the source of interference, which can be determined by turning the unit "Off" and "On", please try to eliminate the problem by using one of the following measures:

Relocate either this product or the device that is being affected by the interference.

Use power outlets that are on different branch (circuit breaker or fuse) circuits or install AC line filter(s).

In the case of radio or TV interference, relocate/reorient the antenna. If the antenna lead-in is 300-ohm ribbon lead, change the lead-in to coaxial type cable.

If these corrective measures do not produce satisfactory results, please contact your local retailer authorized to distribute Vocopro products. If you can not locate the appropriate retailer, please contact Vocopro, 1728 Curtiss Court, La Verne, CA 91750.

### **CAUTION**

The apparatus is not disconnected from the AC power source so long as it is connected to the wall outlet, even if the apparatus itself is turned off. To fully ensure that the apparatus is indeed fully void of residual power, leave unit disconnected from the AC outlet for at least fifteen seconds.



**CAUTION:****READ THIS BEFORE OPERATING YOUR UNIT**

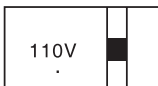
1. To ensure the finest performance, please read this manual carefully. Keep it in a safe place for future reference.
2. Install your unit in a cool, dry, clean place - away from windows, heat sources, and too much vibration, dust, moisture or cold. Avoid sources of hum (transformers, electric motors). To prevent fire or electrical shock, do not expose to rain and water.
3. Do not operate the unit upside-down.
4. Never open the cabinet. If a foreign object drops into the set, contact your dealer.
5. Place the unit in a location with adequate air circulation. Do not interfere with its proper ventilation; this will cause the internal temperature to rise and may result in a failure.
6. Do not use force on switches, knobs or cords. When moving the unit, first turn the unit off. Then gently disconnect the power plug and the cords connecting to other equipment. Never pull the cord itself.
7. Do not attempt to clean the unit with chemical solvents: this might damage the finish. Use a clean, dry cloth.
8. Be sure to read the "Troubleshooting" section on common operating errors before concluding that your unit is faulty.
9. This unit consumes a fair amount of power even when the power switch is turned off. We recommend that you unplug the power cord from the wall outlet if the unit is not going to be used for a long time. This will save electricity and help prevent fire hazards. To disconnect the cord, pull it out by grasping the plug. Never pull the cord itself.
10. To prevent lightning damage, pull out the power cord and remove the antenna cable during an electrical storm.
11. The general digital signals may interfere with other equipment such as tuners or receivers. Move the system farther away from such equipment if interference is observed.

**NOTE:**

Please check the copyright laws in your country before recording from records, compact discs, radio, etc. Recording of copyrighted material may infringe copyright laws.

**Voltage Selector (General Model Only)**

Be sure to position the voltage selector to match the voltage of your local power lines before installing the unit.



# Features:

---

## **Commander HT** (Wireless Handheld Microphone)

- All digital 900 MHz with Mic on Chip™ technology.
- UHF Band (900 MHz) (PLL synthesized) with simple, one-key, automatic scan and pair function.
- 100 feet of wireless coverage.

## **Commander CT** (Wireless Condenser Microphone Transmitter)

- Transmitter with condenser microphone and line input.
- Simple, one-key, automatic scan and pair function.
- Rechargeable (650 mAh Li-ion) for up to 5 hours of usage.

## **Commander HR** (Wireless Portable Receiver)

- UHF band (900 MHz) with auto-pairing.
- Rechargeable Mini receiver (650 mAh Li-ion) with USB charging interface.
- 3.5 mm Headphone jack.
- 3 to 4 1/2 hour battery life.

## **Commander PR** (Wireless Plug In Mic Receiver)

- All digital 900 MHz with Mic on Chip™ technology.
- Rechargeable palm size mini plug-in receiver with 3 hours of operation (on full charge).
- 5V mini USB power port can be charged and powered by power bank or USB wall charger (both not included).

## **Commander UR** (Wireless USB Receiver)

- Wireless USB 3.0 receiver
- UHF-Band
- Built-in Sound-card
- Compatible with Windows, iOS, Android Smartphone, TV, PS3, Wii, etc.
- Dual mode (digital/analog) audio interface.

# Features:

---

## **Commander IT** (Wireless Instrument Transmitter)

- UHF Band (900 MHz) (PLL synthesized) with simple, one-key, automatic scan and pair function.
- Transmitter communicates with unlimited receivers and fits conveniently on instrument without need for extension cables.

## **Commander GT3** (Wireless Guitar/Bass Transmitter)

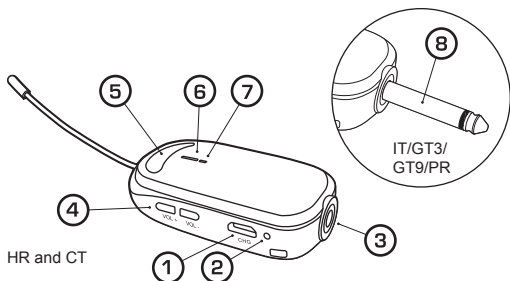
- UHF band (900 MHz) with simple, one-key automatic scan and pair function.
- 1/4" input fixed at 30 degree angle to avoid bumping when inserted into the side of a guitar or bass.

## **Commander GT9** (Wireless Guitar/Bass Transmitter)

- UHF band (900 MHz) with simple, one-key automatic scan and pair function.
- 1/4" input fixed at 90 degree angle to avoid bumping when inserted into the front of a guitar or bass.

## Functions:

---



### All receiver and transmitter body:

- ① **Chg-** connect micro USB charging cable here to recharge the internal battery.
- ② **Chg LED-** Red light indicates battery is low or charging. Blue light indicates that battery status is full after charging and has sufficient charge.
- ③ **3.5mm jack-** connect a condenser microphone, line in audio source (**CT only**) or connect a headphone source here (**HR only**).
- ④ **Vol + /-** Transmission/reception volume level.
- ⑤ **Power/Sync button-** press once rapidly to power unit on, press once more to power unit off. Press and hold this button when the unit is on in order to change and re-sync the current transmitting frequency channel.
- ⑥ **Power LED-** a blue light means the unit is powered on and operating.

### Receivers: Plug in MIC and Portable

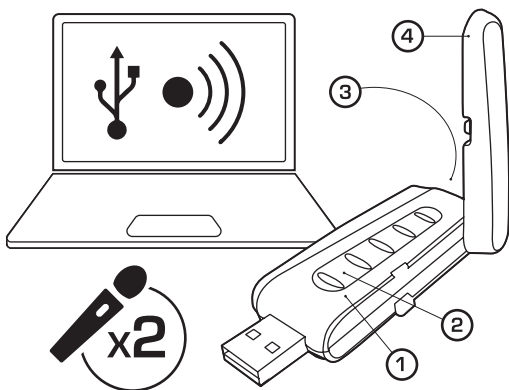
- ⑦ **RF LED-** this light shows when a radio frequency is being received and confirms that the receiver is connected to the transmitter operating on the same frequency grouping. (**HR only-** RF light must be solid and an audio input signal must be present).

- ⑧ **(PR only) 1/4" jack connector-** plug this end into a high impedance mic input connector (680 Ohm).

**Transmitters:** Handheld, Condenser MIC, and Instruments

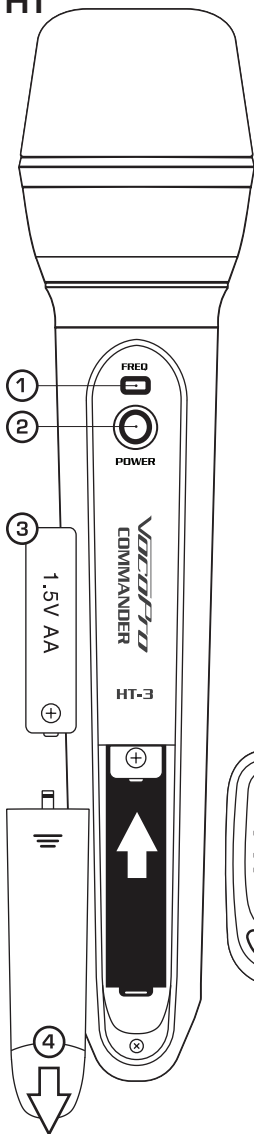
- ⑦ **AF LED-** this light shows when an audio input signal is present.
- ⑧ **(IT/GT3/GT9) 1/4" jack connector –** plug this end into an instrument with a 1/4" line level output

**Commander UR** (Wireless USB Receiver)



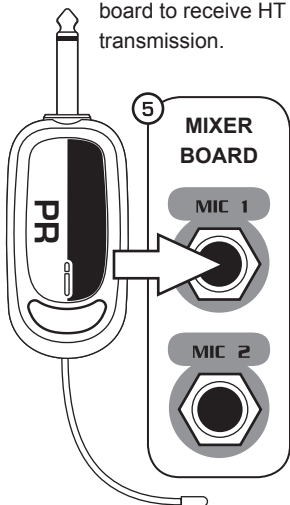
- ① **Blue LED-** this signal LED confirms a solid is connected to a computer source.
- ② **Green LED-** these signal LEDs confirm when radio frequency transmissions are being received.
- ③ **Line output-** 3.5mm line output jack can be used to monitor received wireless audio transmission. (On back of unit, not shown.)
- ④ **Antenna-** lifts up to enhance reception.

# HT



## Commander HT

- 1 **FREQ-** Press this button when the unit is on in order to change and re-sync the current transmitting frequency channel.
- 2 **Power-** press once rapidly to power unit on, press once more to power unit off.
- 3 **Battery-** Use 2 AA batteries inserted as shown.
- 4 **Cover-** press at top thumb grips and slide battery cover down.
- 5 **Plug commander PR** into mixing board to receive HT transmission.



# Technical Specifications:

---

## Available in Four frequency groups:

- Group 1 (HT/CT/HR/IT/PR-1):  
902.0-908.5 MHz
- Group 2 (HT/CT/HR/IT/PR-2):  
915.0-921.5 MHz
- Group 3 (HT/CT/HR/IT/PR-3):  
908.5-915.0 MHz
- Group 4 (HT/CT/HR/IT/PR-4):  
921.5-928.0 MHz

## HT Wireless Handheld Transmitter

- Microphone pattern: Uni-Directional
- Frequency response: 75 Hz-18 kHz  $\pm$  3 dB
- Power 2 AA battery (included):  
2x 1.5V AA size

## HR- Wireless Portable Receiver

- Frequency response: 75 Hz-18 kHz  $\pm$  3 dB
- Headphone output: max. 1V (32 Ohm headphone @ 60mW max.)

## IT/GT3/GT9 Wireless Instrument, Guitar-Bass Transmitter

- Impedance: 10k Ohm
- Frequency response: 75 Hz-18 kHz  $\pm$  3 dB
- Rechargeable battery spec:  
3.7v Li-ion 650mAh

## PR- Wireless Plug In Mic Receiver

- Line out via 1/4" phone jack
- Battery: 3.7v Li-ion 650 mAh
- Output impedance: 680 Ohm
- Supports Single or Dual channel transmissions from frequency groups: 1, 2 or 3, 4 (frequency group must match transmitter)

# Getting Connected:

---

## Commander HT

The Commander-HT (wireless handheld microphone) requires any of the corresponding receiver models in order to operate: Commander-HR, Commander-PR, or Commander-UR\*

- Insert fresh batteries.
- Power ON the Commander-HT by pressing the Power Button once (a green power LED light will now be visible)  
Note: A flashing green LED indicates low battery.
- If the Commander HT does not automatically sync (connect) to one of the Commander receivers, press the **FREQ** button and check for a solid **AF** light on the receiver. Note: Receiver is not included and is shown for illustration purposes only.

## Commander CT

The Commander-CT (wireless condenser microphone transmitter) requires any of the corresponding receiver models:

Commander-HR, Commander-PR, or  
Commander-UR\*

- Connect Commander HM or a condenser/ high impedance style microphone to the 3.5mm jack.
- Power ON the Commander-CT by pressing the Power Button once (a blue power LED light will now be visible).
- Adjust output volume on your microphone (if applicable) and the volume of the Commander-CT.
- Speak into the microphone and verify that the **AF** LED is showing the Commander-CT is in fact receiving audio input signal.

\*Please reference the frequency groupings guide in the technical specifications section of this manual for correct pairings.



# Getting Connected Continued:

---

## Commander HR

The Commander HR (wireless portable receiver) will function with any of the corresponding transmitter models: Commander-HT, Commander-IT or Commander-CT\*

- Connect a pair of headphones to the 3.5mm jack.
- Press power button once to power ON
- Check that the RF LED light is ON, this confirms a solid connection.
- Adjust the output volumes to your preference.

## Commander IT

The Commander-IT (wireless instrument transmitter) requires any of the corresponding receiver models: Commander-HR, Commander-PR or Commander-UR\*

- Plug the Commander IT directly into a line output connector on your instrument (keyboard, guitar, etc.)
- Power ON the Commander IT by pressing the Power Button once.  
Note: A blue power LED light will now be visible
- Adjust output volume on your instrument and the volume of the Commander IT.
- Play instrument and verify that the AF LED is showing the Commander IT is in fact receiving audio input signal.

## Commander PR

The Commander-PR (wireless plug-in mic receiver) will function with any of the corresponding transmitter models:

\*Please reference the frequency groupings guide in the technical specifications section of this manual for correct pairings.

## **Commander-HT, Commander-IT or Commander-CT**

- Plug 1/4" jack into a mic input connector.
- Press power button once to power ON.
- Check that the RF LED light is ON, this confirms a solid connection.
- Adjust the output volumes to your preference.

## **Commander UR** (wireless USB receiver)

- Insert UR into a computer or laptop (preferably with USB 3.0 compatible port).
- Power on compatible transmitter (Commander models: HT, IT or CT).
- Green LEDs should now be visible.
- Using a recording software or pre-installed microphone recorder, on your computer's operating system, check for wireless audio input reception.

## **Commander GT3/GT9** (wireless guitar transmitter)

- The commander GT3 or GT9 (wireless guitar/bass transmitter) requires any of the corresponding receiver models: Commander-HR, Commander-PR, or Commander UR
- Plug the Commander GT3/GT9 directly into the 1/4" jack on your guitar or bass.
- Power ON by pressing the power button once. Note: A blue power LED will now be visible.
- Adjust output volume on your instrument and volume on the Commander GT3/GT9.
- Play instrument and verify that the AF LED lights up to show the transmitter is receiving audio from the instrument.

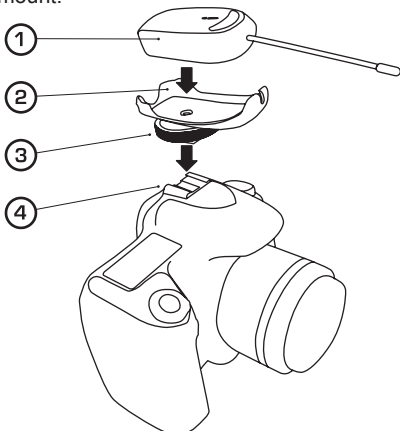
# SA and HM Accessories:

---

## Commander SA

Link Shoe Mount Adapter

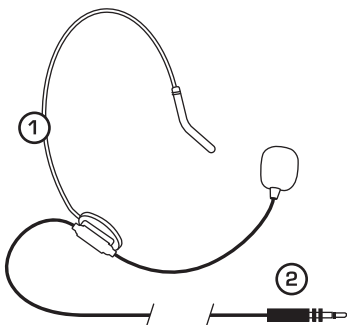
- ① **Carefully** position then snap HR Wireless Condenser Mic firmly into Shoe Mount Adapter.
- ② **Shoe Mount Adapter** square base slides into hot shoe mount on camera.
- ③ **Rotate** wheel to hand tighten SA mount.
- ④ **Camera** or other recording device with hot shoe mount.



## Commander HM

Link Headset MIC

- ① **Adjust** Headset comfortably.
- ② **Plug** 3.5mm jack into Commander CT.



# Our Team is Here to Help



Please do not return to the retailer if you are having a technical issue operating or connecting the unit. Additional information and support can be found at **[vocopro.com/support](http://vocopro.com/support)**

**Toll Free: 800-678-5348**

**TEL: 909-593-8893**

**FAX: 909-593-8890**

Email Tech Support at:  
**[techsupport@vocopro.com](mailto:techsupport@vocopro.com)**

**Commander  
Owner's Manual**

© VocoPro 2019

v2.0828

[www.vocopro.com](http://www.vocopro.com)